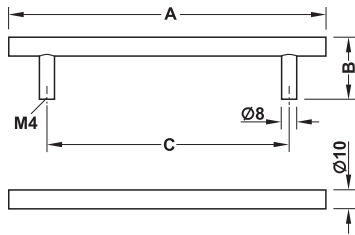


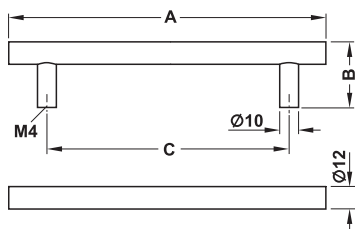
Furniture handle Ø 10 mm



> Material: Stainless steel, quality 1.4301/AISI 304
> Finish/colour: Satin brushed

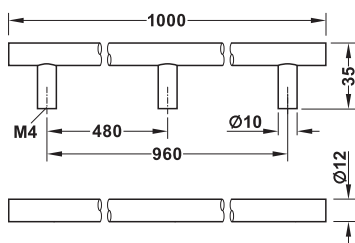
Dim. A mm	Dim. B mm	Dim. C mm	Packing pieces	Cat. No.
136	35	96	1 or 30	155.01.380
168	35	128	1 or 20	155.01.381
200	35	160	1 or 20	155.01.382
232	35	192	1 or 20	155.01.383
264	35	224	1 or 20	155.01.384
328	35	288	1 or 15	155.01.385
360	35	320	1 or 10	155.01.386
392	35	352	1 or 10	155.01.387
488	35	448	1 or 10	155.01.388
600	35	560	1 or 10	155.01.389
700	35	660	1 or 8	155.01.390
800	35	760	1 or 8	155.01.391

Furniture handle Ø 12 mm



> Material: Stainless steel, quality 1.4301/AISI 304

Finish/colour	Dim. A mm	Dim. B mm	Dim. C mm	Packing pieces	Cat. No.
With 2 bases					
Satin brushed	136	35	96	1 or 20	155.01.400
	168	35	128	1 or 10	155.01.401
	200	35	160	1 or 10	155.01.402
	232	35	192	1 or 10	155.01.403
	264	35	224	1 or 10	155.01.404
	296	35	256	1 or 10	155.01.414
	328	35	288	1 or 10	155.01.405
	360	35	320	1 or 10	155.01.406
	392	35	352	1 or 10	155.01.407
	488	35	448	1 or 10	155.01.408
	500	35	460	1 or 8	155.01.410
	600	35	560	1 or 5	155.01.411
	700	35	660	1 or 5	155.01.412
Polished brass plated, PVD coated	136	35	96	1, 20 or 100	112.04.060
	168	35	128	1, 10 or 50	112.04.061
	136	35	96	1, 20 or 100	112.04.062
Black, satin, PVD coated	136	35	96	1, 20 or 100	112.04.062
	168	35	128	1, 10 or 50	112.04.063
With 3 bases					
Satin brushed	1000	35	960	1 or 20	155.01.413



M4 threaded screws

► FF 1.260

DGH-M-INT 2020, HDE-en, 05/19, Dimensional data not binding. We reserve the right to alter specifications without notice.

Timeless Furniture Handles